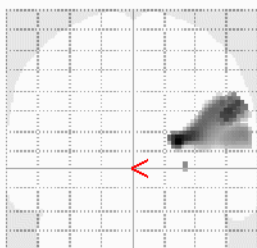
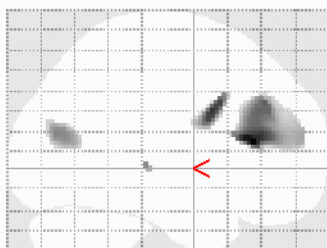
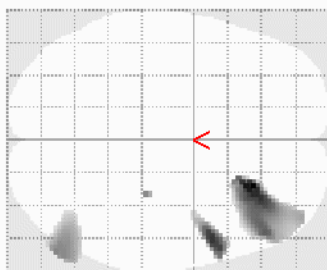


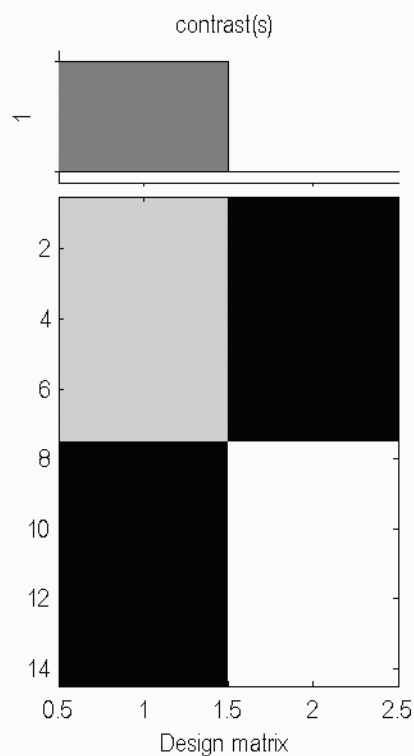
T[1 0]



SPM<sub>map</sub>  
[0, 0, 0]



SPM{T<sub>12</sub>}



**SPMresults:** .\MATLAB\con pa low  
Height threshold T = 6.896334 [p<0.05 (FWE)]  
Extent threshold k = 0 voxels

**Statistics: p-values adjusted for search volume**

set-level		cluster-level				peak-level					mm mm mm		
$\rho$	c	$\rho_{FWE-corr}$	$q_{FDR-corr}$	$k_E$	$\rho_{uncorr}$	$\rho_{FWE-corr}$	$q_{FDR-corr}$	T	(Z <sub>≡</sub> )	$\rho_{uncorr}$			
<b>0.000</b>	<b>4</b>	<b>0.000</b>	<b>0.000</b>	<b>974</b>	<b>0.000</b>	<b>0.003</b>	<b>0.253</b>	<b>10.18</b>	<b>5.13</b>	<b>0.000</b>	<b>24</b>	<b>32</b>	<b>14</b>
						0.009	0.277	8.71	4.80	0.000	48	38	34
						0.014	0.333	8.20	4.68	0.000	22	22	18
		<b>0.003</b>	<b>0.083</b>	<b>127</b>	<b>0.062</b>	<b>0.006</b>	<b>0.253</b>	<b>9.28</b>	<b>4.94</b>	<b>0.000</b>	<b>52</b>	<b>10</b>	<b>30</b>
		<b>0.000</b>	<b>0.015</b>	<b>296</b>	<b>0.008</b>	<b>0.015</b>	<b>0.333</b>	<b>8.17</b>	<b>4.67</b>	<b>0.000</b>	<b>58</b>	<b>-74</b>	<b>18</b>
		<b>0.042</b>	<b>0.840</b>	<b>2</b>	<b>0.840</b>	<b>0.016</b>	<b>0.333</b>	<b>8.10</b>	<b>4.65</b>	<b>0.000</b>	<b>28</b>	<b>-26</b>	<b>2</b>

table shows 3 local maxima more than 8.0mm apart

Height threshold: T = 6.90, p = 0.000 (0.050)  
Extent threshold: k = 0 voxels, p = 1.000 (0.050)  
Expected voxels per cluster, <k> = 36.424  
Expected number of clusters, <c> = 0.05  
FWEp: 6.896, FDRp: Inf, FWEc: 2, FDRc: 296

Degrees of freedom = [1.0, 12.0]  
FWHM = 29.431 8 27.8 mm mm mm; 14.7 15.9 13.9 (voxels)  
Volume: 1450600 = 181325 voxels = 50.5 resels  
Voxel size: 2.0 2.0 2.0 mm mm mm; (resel = 3258.49 voxels)